

Connecting to ConX



Leica Geosystems DirtPrep GG

Track Files Productivity EarthMover Utilization 3D

Search ?

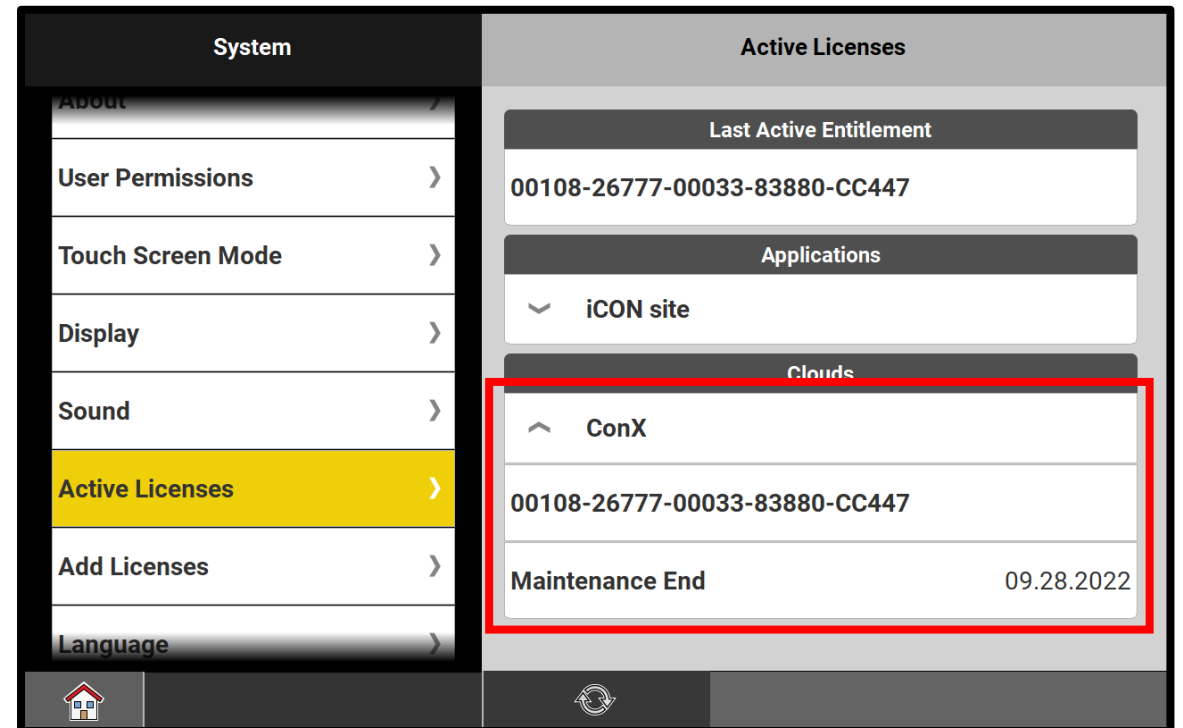
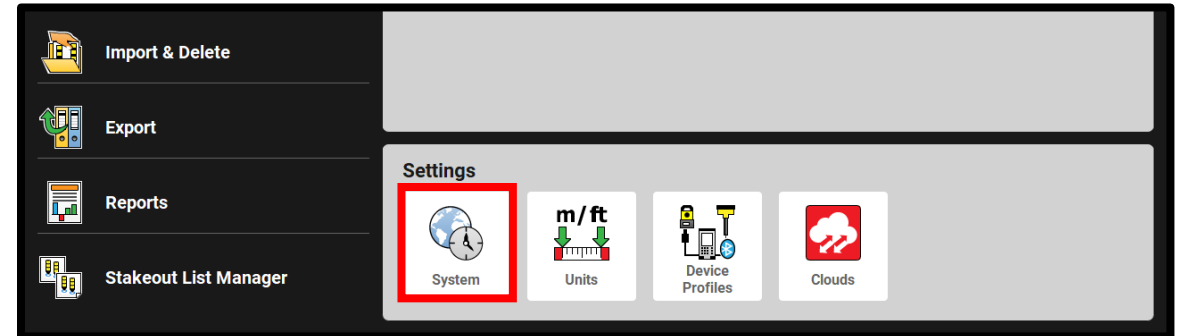
Units Location History

Zoom	Status	Name	Type	Reference model	Last seen	Make	Model	Note	Cost Type
+	Offline	DPS-CC80-435	Field Crew	SMALL BUSH BACK LOT.TRM, BUILDI...	6 hours ago				None
+	Offline	Test	Field Crew	Demo Lines Surface.dxf	a day ago				None
+	Offline	DPS CC80 582	Field Crew	Demo Lines Surface.dxf	2 months ago				None
+	Offline	DPS-CC80-599	Field Crew	MODIFIED BUSH.TRM	3 months ago				None





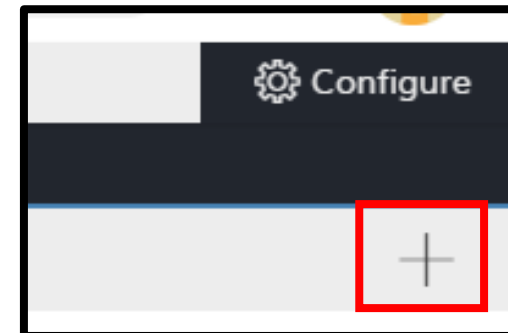
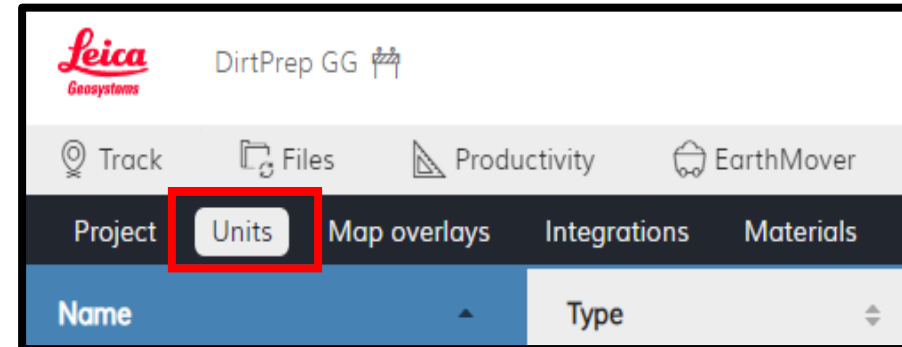
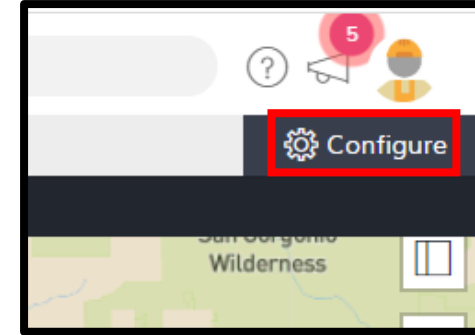
Connecting to ConX

- Check if the ConX license is active by going to System, Active Licenses, ConX



Connecting to ConX

- On ConX website 'conx.leica-geosystems.com,' create a project (see previous guide) and pair the unit to ConX
- From Project screen, press  top right
- Select **Units** tab, then press  under configure



Connecting to ConX

- On Add Unit tab, name unit [Company Name-CC80-last 3 of Serial Number]
- Select 'Field Crew' as unit type
- Press Next

New Unit

Add unit Add Device Pair Device Add Entitlement Summary

Unit Name
DPS-CC80-157

Unit Type
Field Crew

Make
Model

Note

Cancel Next



Connecting to ConX

- On **Add Device** tab, select **iCON field** as device type
- Press **Add Device**

New Unit

Add unit Add Device Pair Device Add Entitlement Summary

Device Type

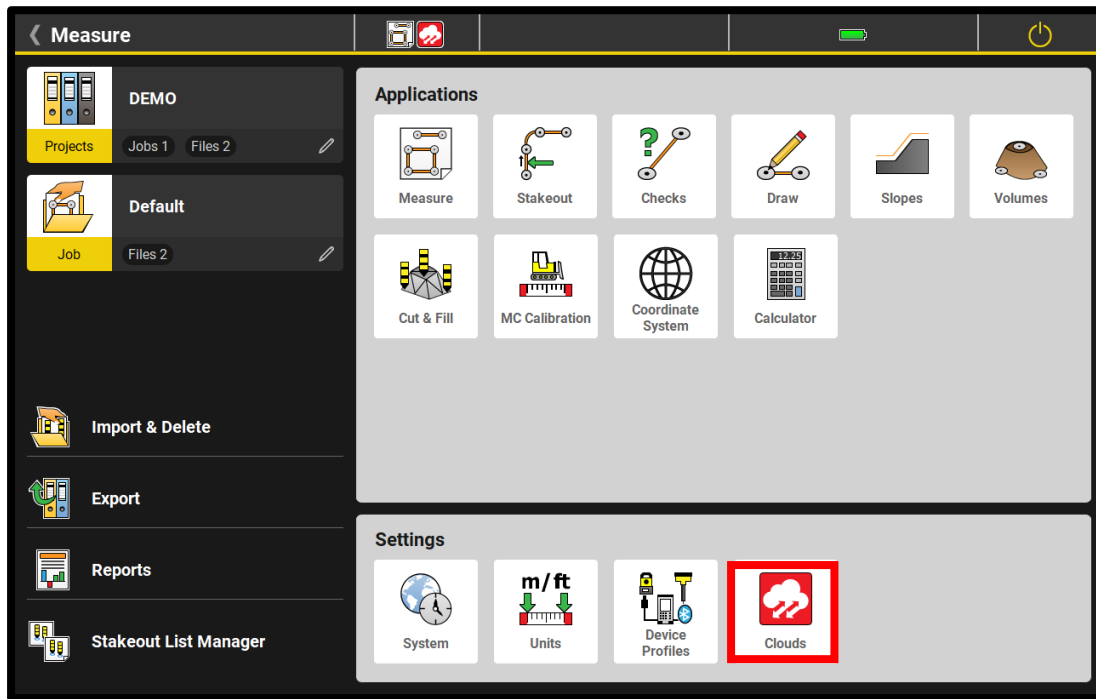
iCON field

Skip Add Device

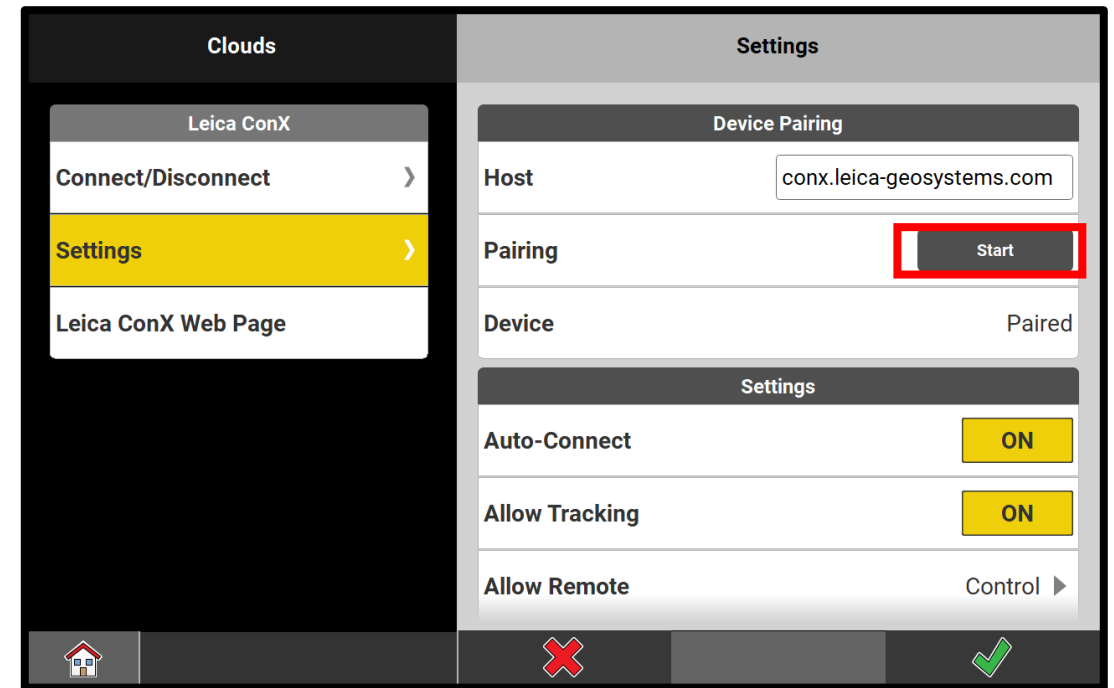


Connecting to ConX

- On iCON Site Home screen, select 'Clouds' app

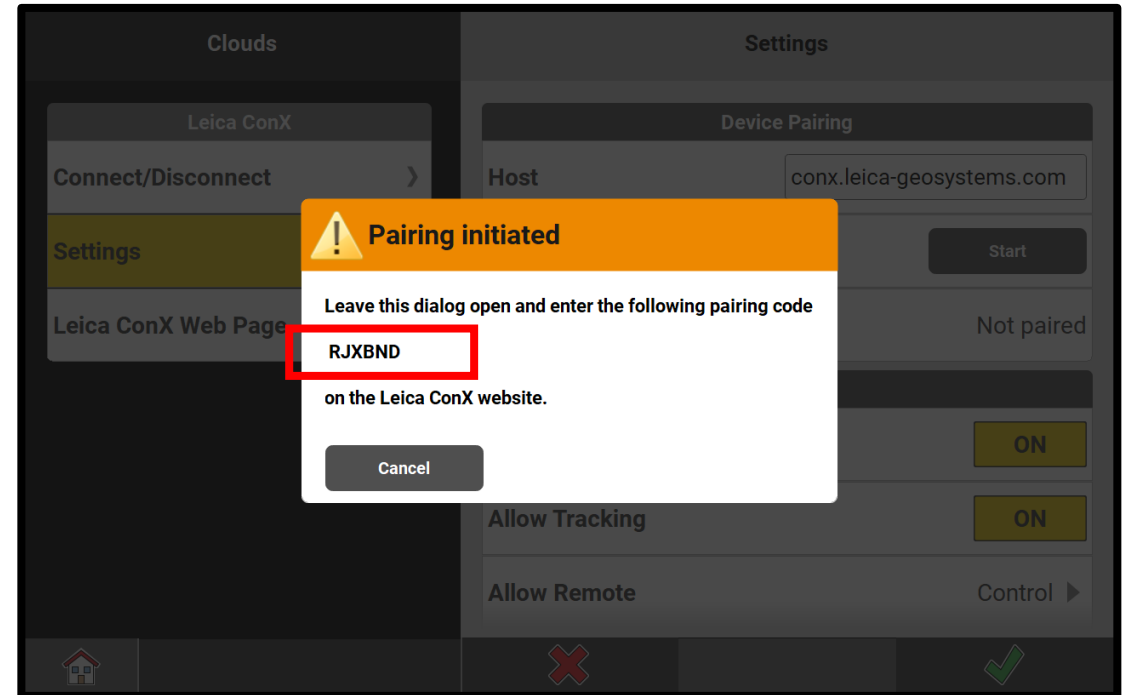


- Select Settings
- Pairing, press Start



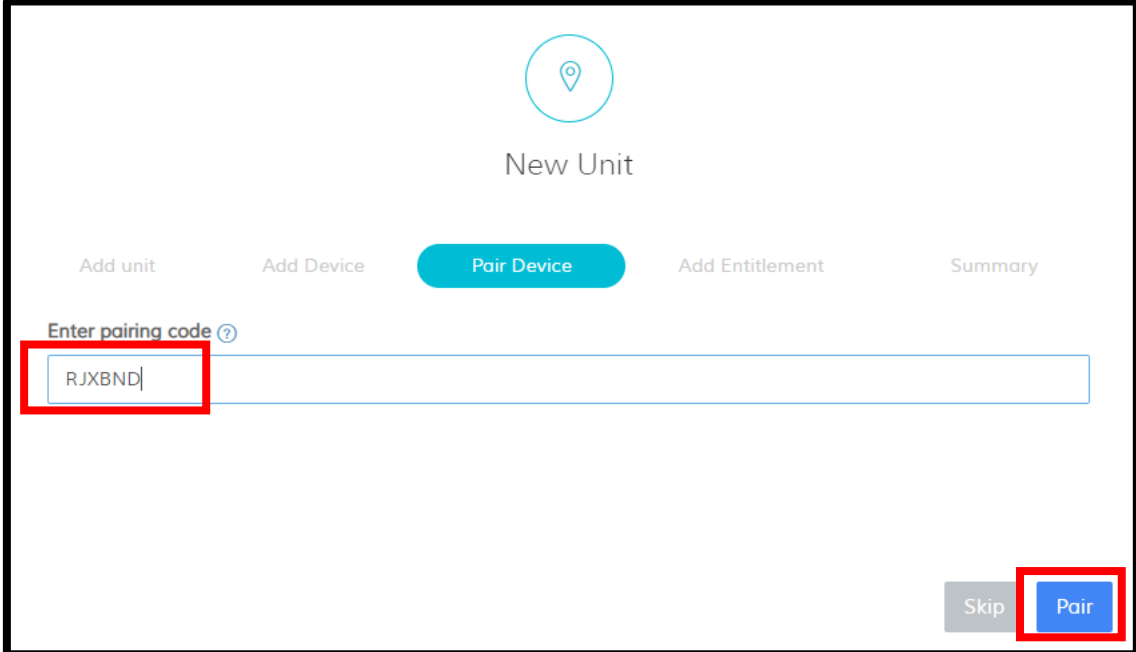
Connecting to ConX

- A message with a 6-digit code will appear
- This is the code to enter on the ConX website



Connecting to ConX

- On the ConX website, **Enter pairing code**
- Press **Pair**

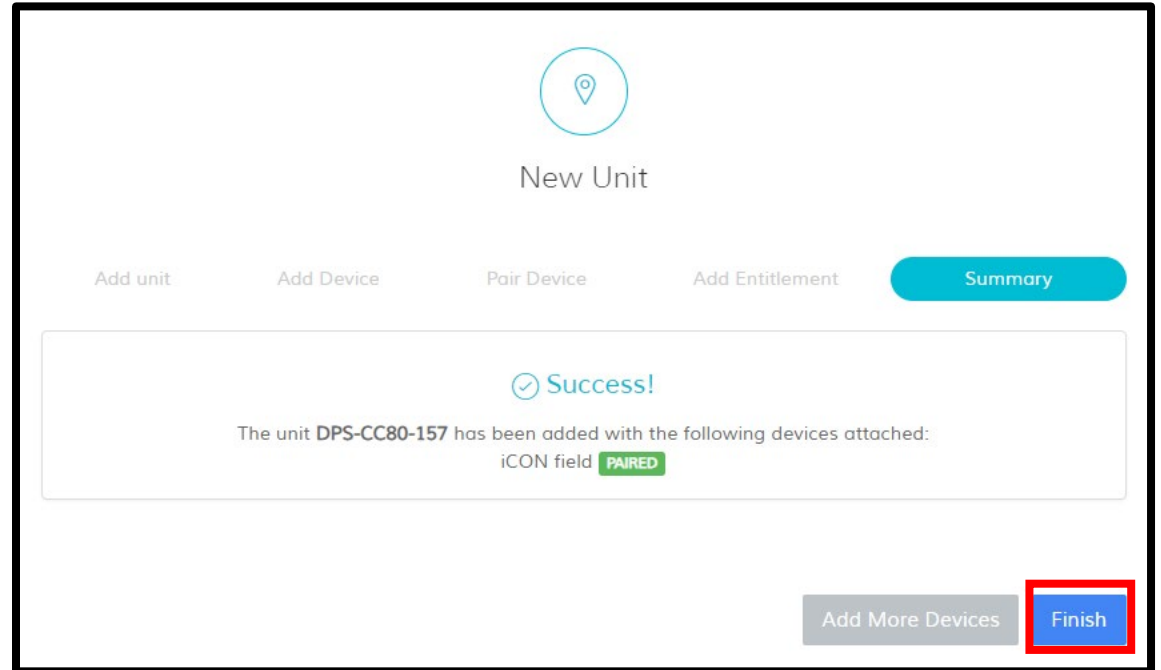


The screenshot shows the 'New Unit' interface on the ConX website. At the top, there is a location pin icon and the text 'New Unit'. Below this, there are five tabs: 'Add unit', 'Add Device', 'Pair Device', 'Add Entitlement', and 'Summary'. The 'Pair Device' tab is active and highlighted in blue. Underneath the tabs, there is a label 'Enter pairing code ?' followed by a text input field containing the code 'RJXBND'. A red box highlights the input field. At the bottom right, there are two buttons: 'Skip' (grey) and 'Pair' (blue). A red box highlights the 'Pair' button.




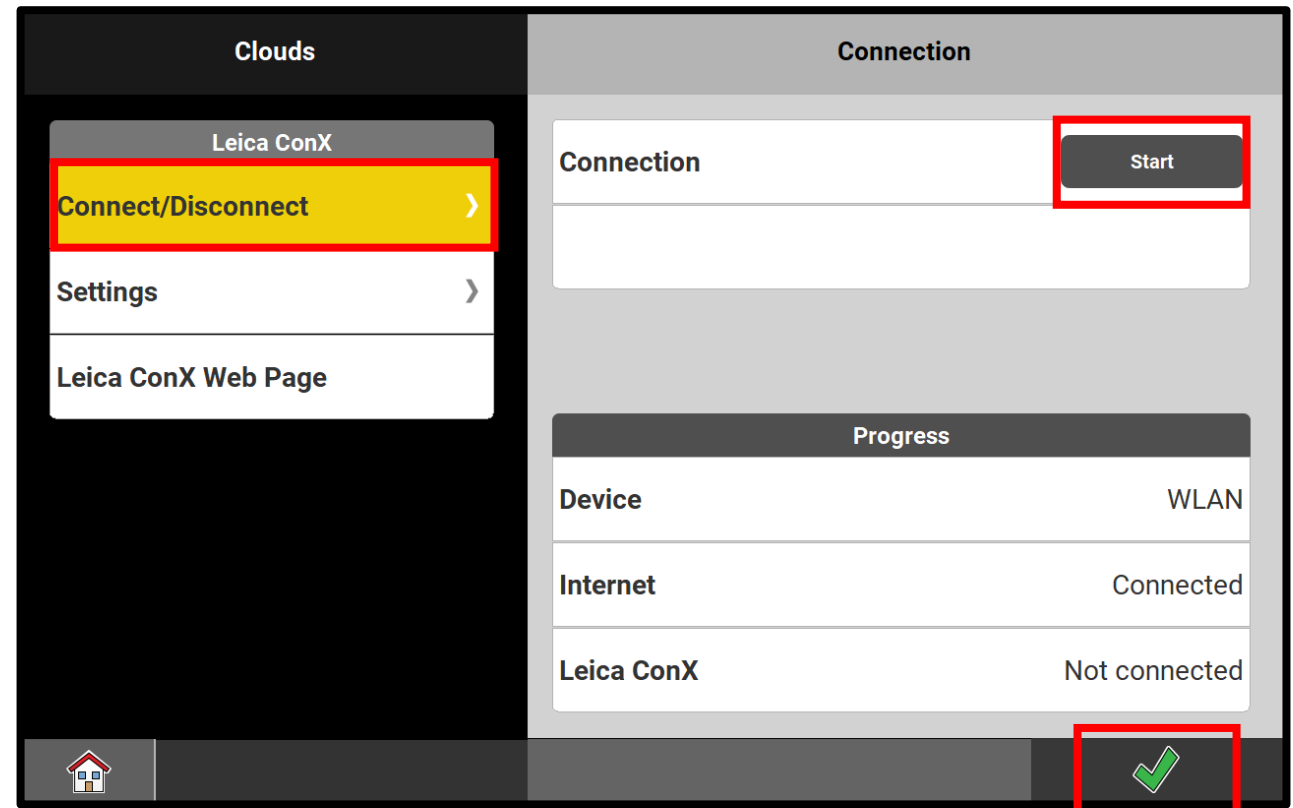
Connecting to ConX

- A success message will appear
- Press **Finish**




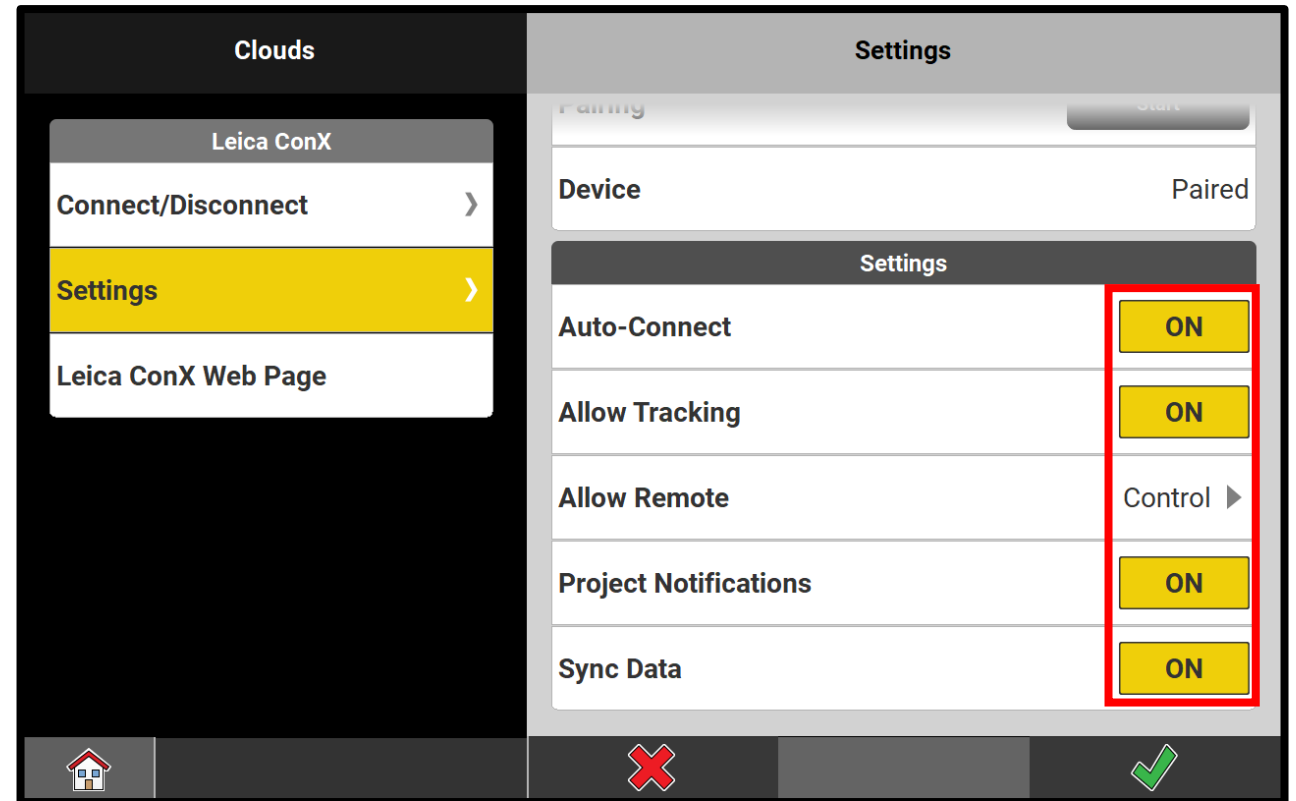
Connecting to ConX

- In iCON Site, select **Connect / Disconnect**
- Connection, press **Start**
- Press  when connected



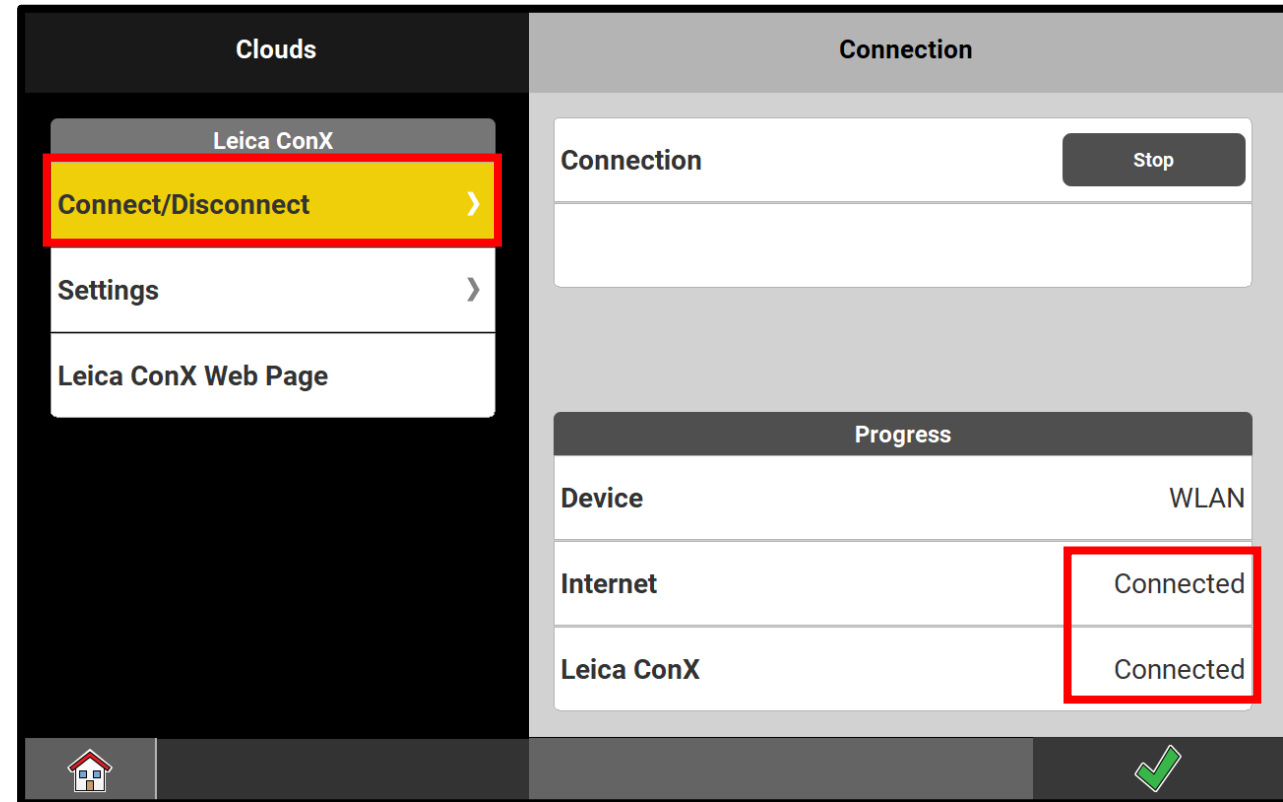
Connecting to ConX

- Select **Settings**
- Turn on all options
- Allow remote, **Control**
- Press 



Connecting to ConX

- Internet and Leica ConX should now be connected
- Now ready to upload and download files



Connecting to ConX

- ConX red cloud icon on top of Home screen shows connection status

