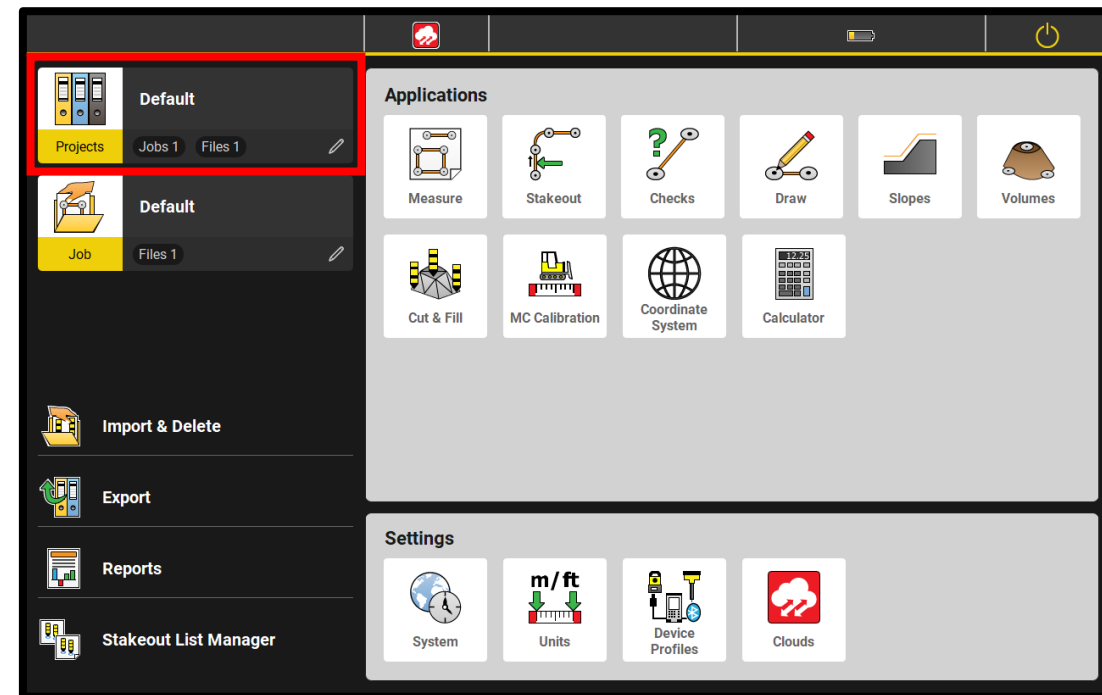
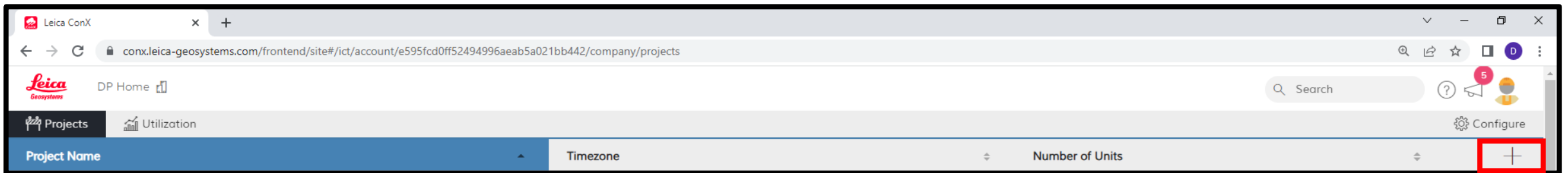


Creating Project in ConX and iCON Site



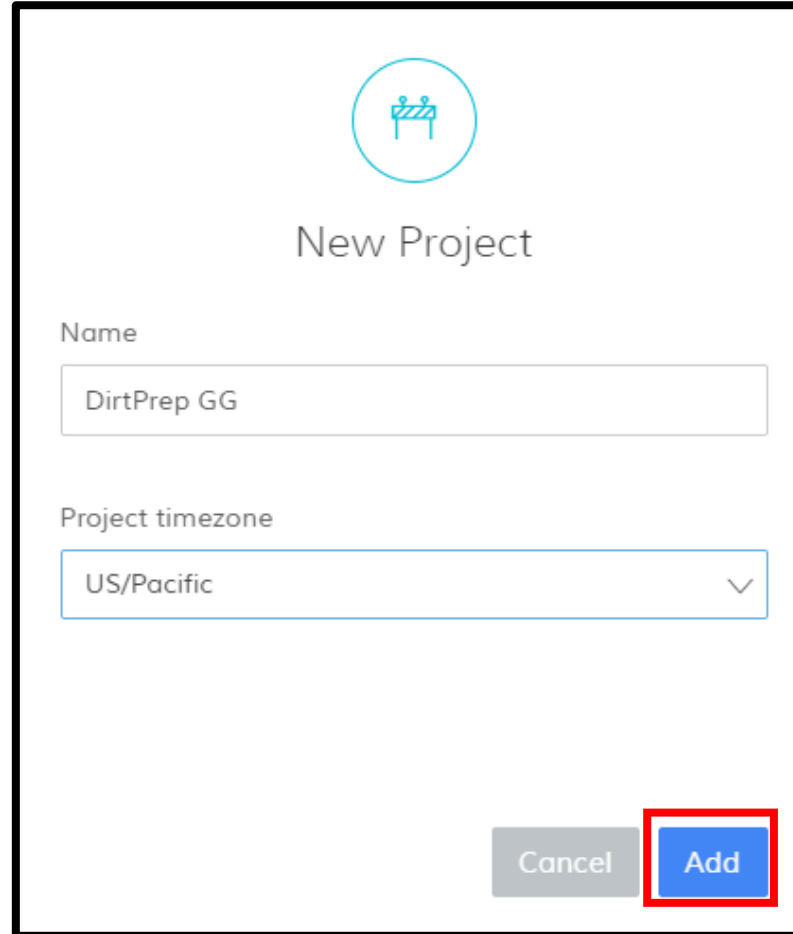
Creating Project in ConX

- Sign into ConX
- On the far right, press  under  to add a new project



Creating Project in ConX

- Name the project and select the appropriate time zone
- Press **Add**



New Project

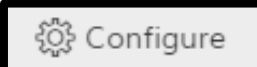
Name
DirtPrep GG

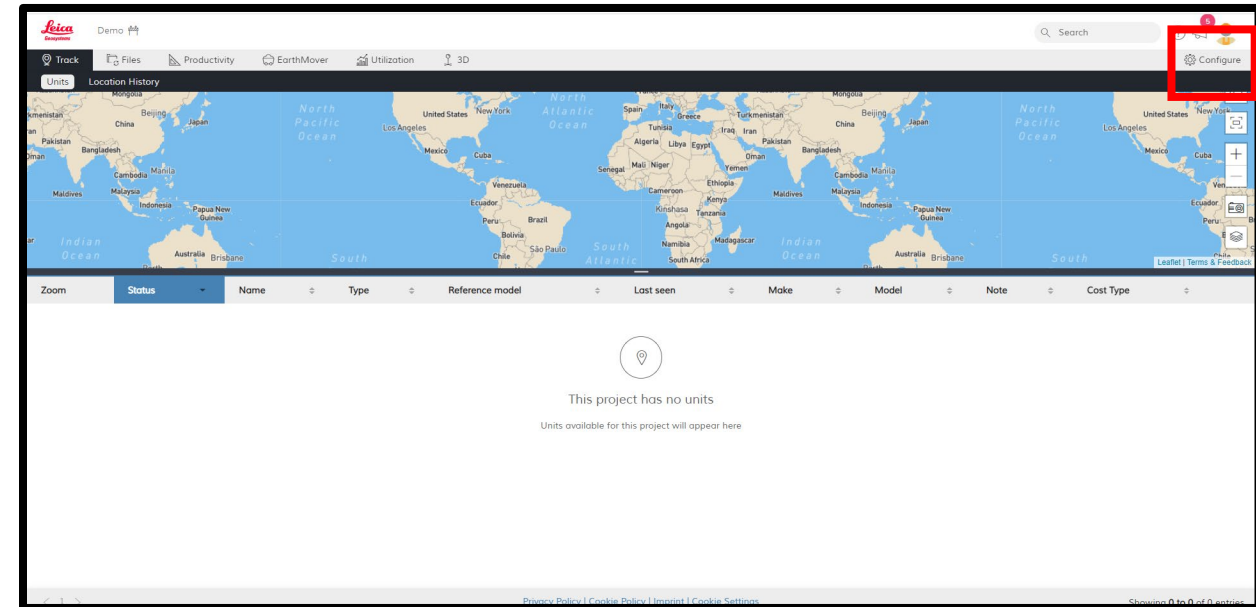
Project timezone
US/Pacific

Cancel Add



Creating Project in ConX

- Once project is created, set the units
- While in project tab, Press 



Creating Project in ConX

- Set Units of Measurement to “US Survey Feet”
- Press Update info to save and continue

The screenshot displays the Leica ConX software interface for creating a project. The 'Project' tab is active, showing the following configuration details:

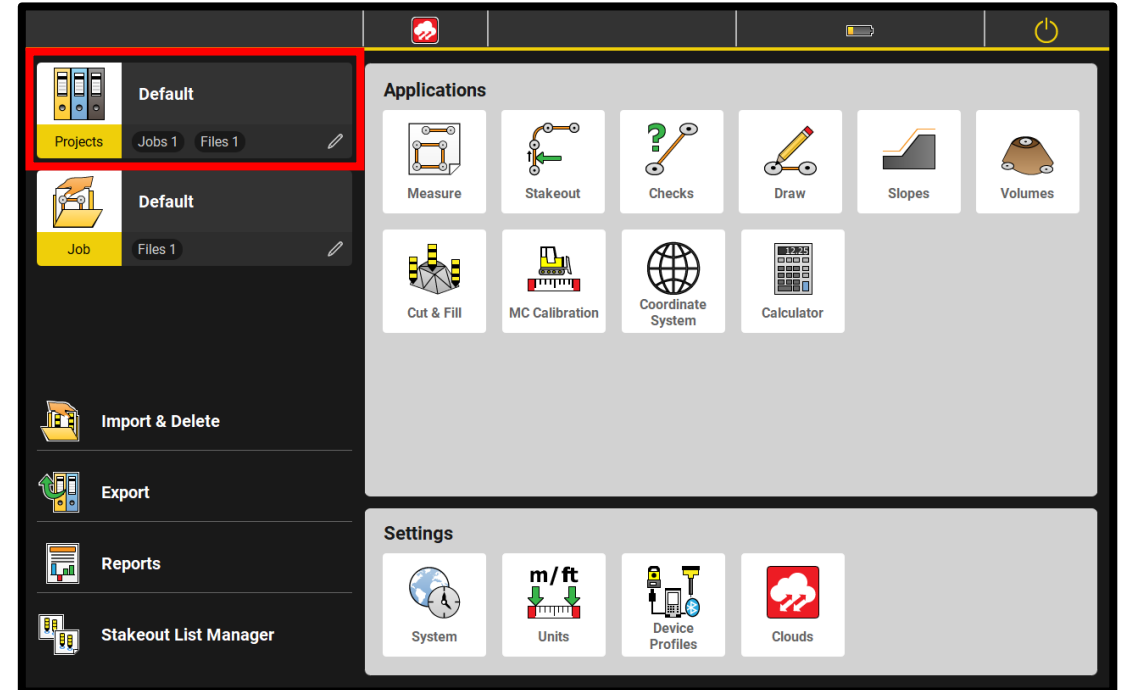
- Project Name: Demo
- Project ID: DEMAX
- Timezone: US/Pacific
- Project Coordinate system: - None selected
- Unit of measurement: US SURVEY FEET (selected)
- EPSG: METERS
- Project Boundary: US SURVEY FEET

At the bottom right of the form, there are two buttons: 'Reset form' and 'Update info'. The 'Update info' button is highlighted with a red rectangular box, indicating the next step in the process.



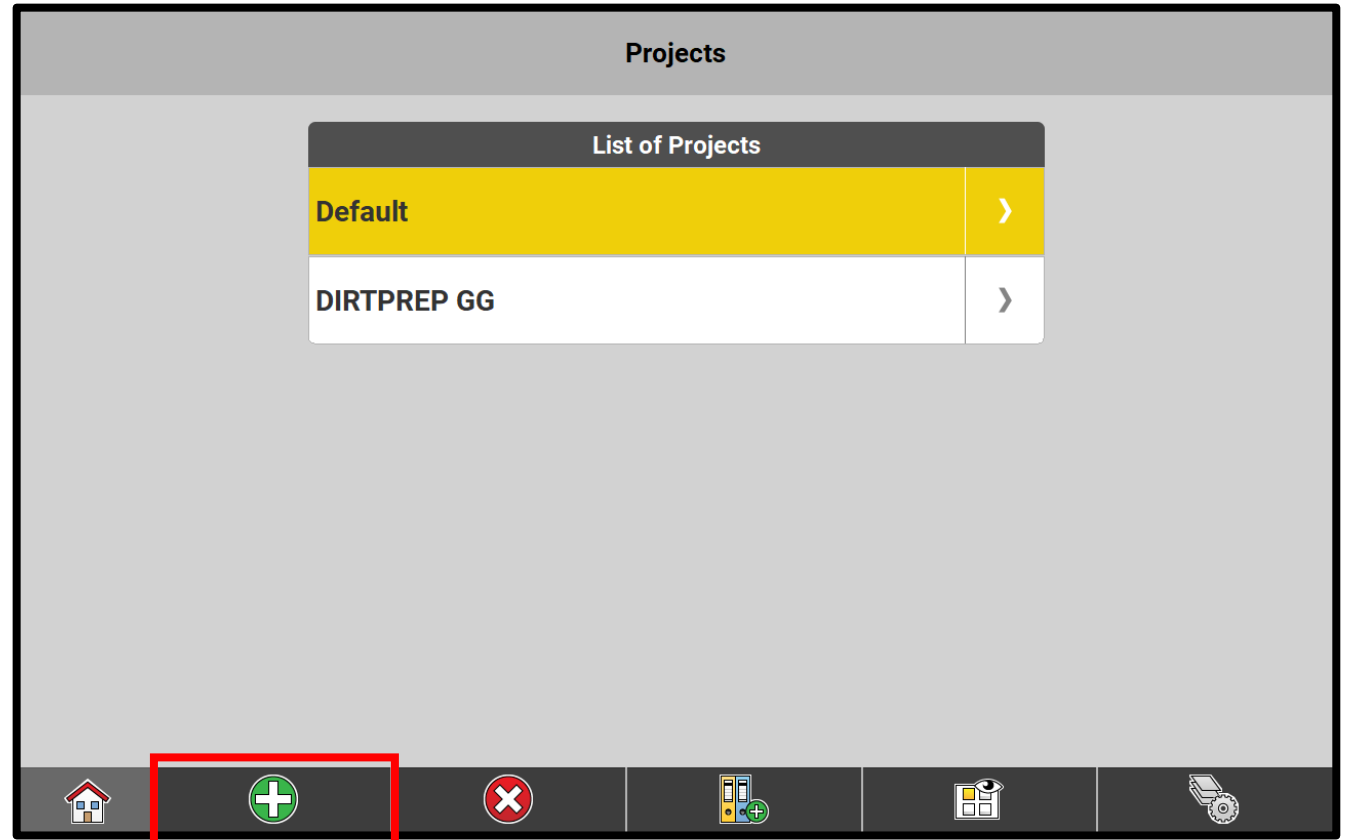
Creating Project in iCON Site

- When first starting on the tablet, create a project to contain all project data (models and measurements)
- Start on home screen and press **Projects**



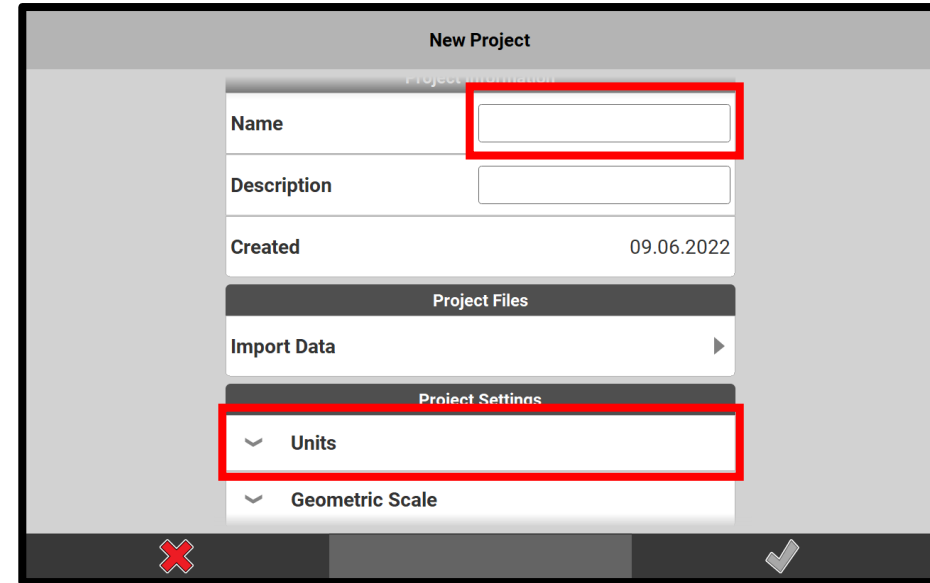
Creating Project in iCON Site

- Press  to create new project



Creating Project in iCON Site

- Name project
- Set Units to US Survey Feet
- Press  to save project



New Project

Project information

Name

Description

Created 09.06.2022

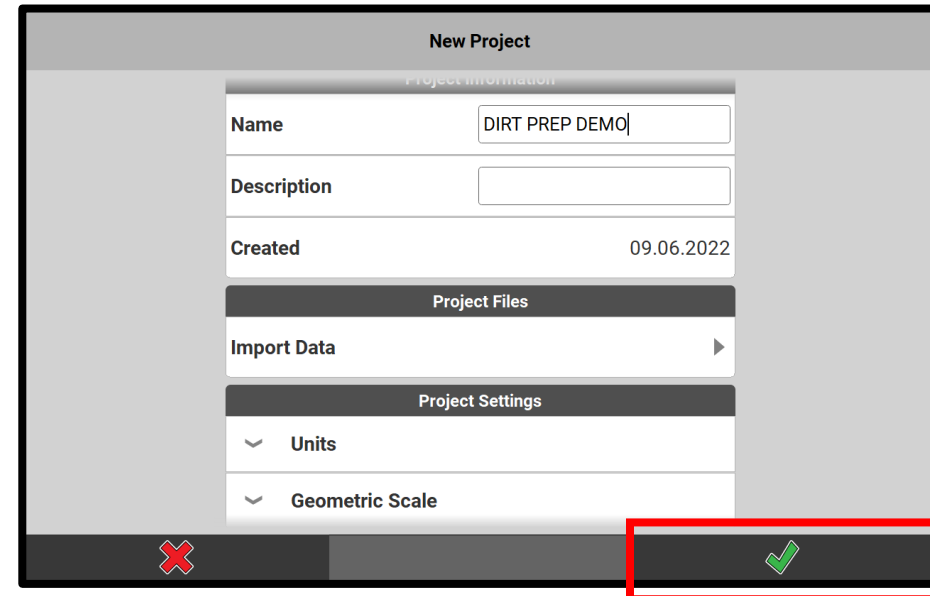
Project Files

Import Data ▶

Project Settings

Units

Geometric Scale



New Project

Project information

Name DIRT PREP DEMO

Description

Created 09.06.2022

Project Files

Import Data ▶

Project Settings

Units

Geometric Scale

